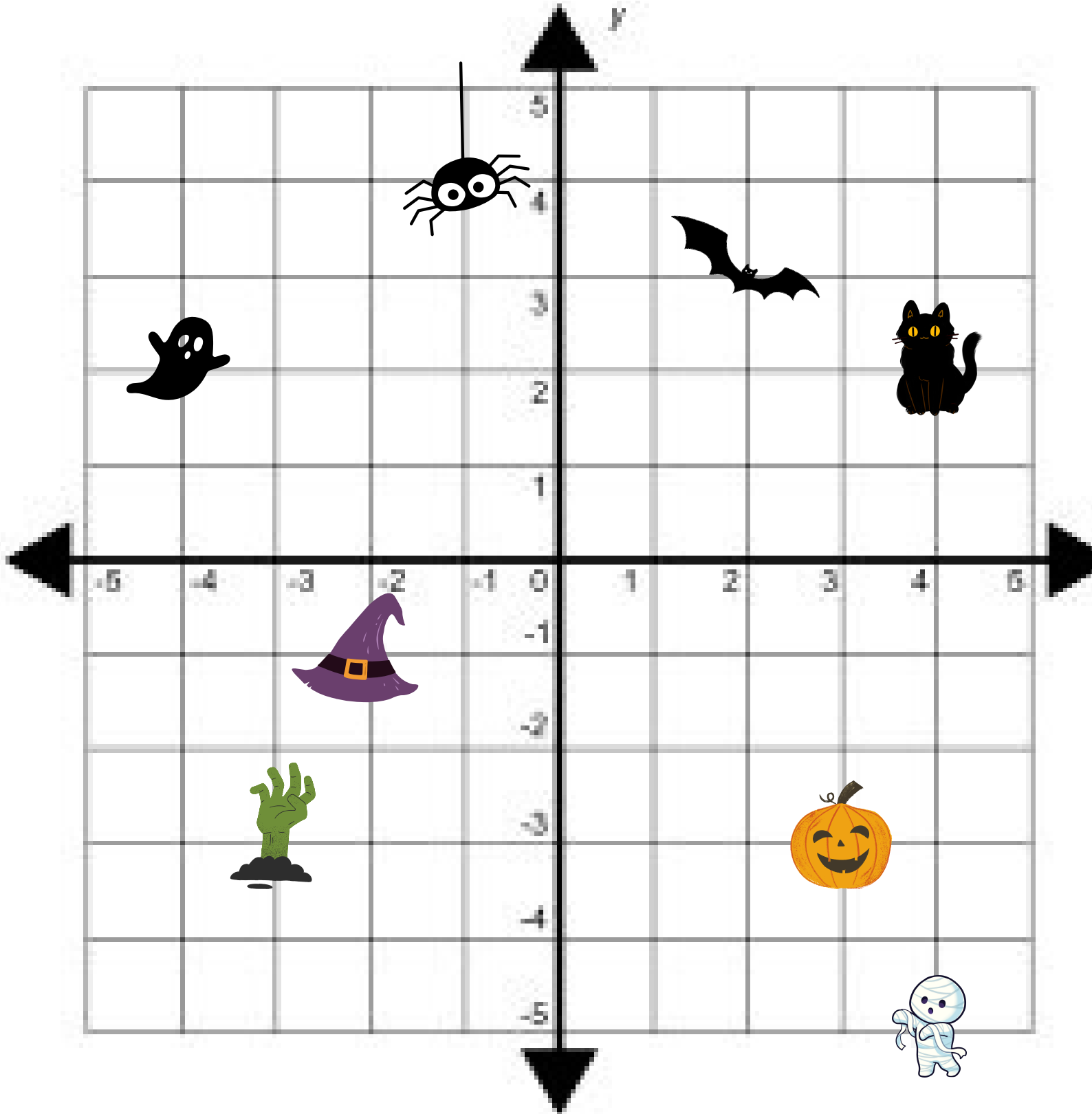


# TRANSLATION

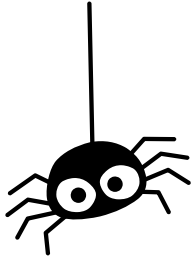
Use the instructions on the next page to translate each symbol.  
You can draw the symbols on or use a cut out and stick it on..





TRANSLATE EACH SYMBOL USING THE INSTRUCTIONS

WRITE THE NEW COORDINATE



$$\left\{ \begin{array}{l} -3 \\ -5 \end{array} \right\}$$

3 left, 5 down

( , )



$$\left\{ \begin{array}{l} 2 \\ -1 \end{array} \right\}$$

2 right, 1 down

( , )



$$\left\{ \begin{array}{l} 2 \\ -5 \end{array} \right\}$$

2 right, 5 down

( , )



$$\left\{ \begin{array}{l} -1 \\ -3 \end{array} \right\}$$

1 left, 3 down

( , )



$$\left\{ \begin{array}{l} 6 \\ 5 \end{array} \right\}$$

6 right, 5 up

( , )



$$\left\{ \begin{array}{l} -6 \\ 1 \end{array} \right\}$$

6 left, 1 up

( , )



$$\left\{ \begin{array}{l} -6 \\ 6 \end{array} \right\}$$

6 left, 6 up

( , )

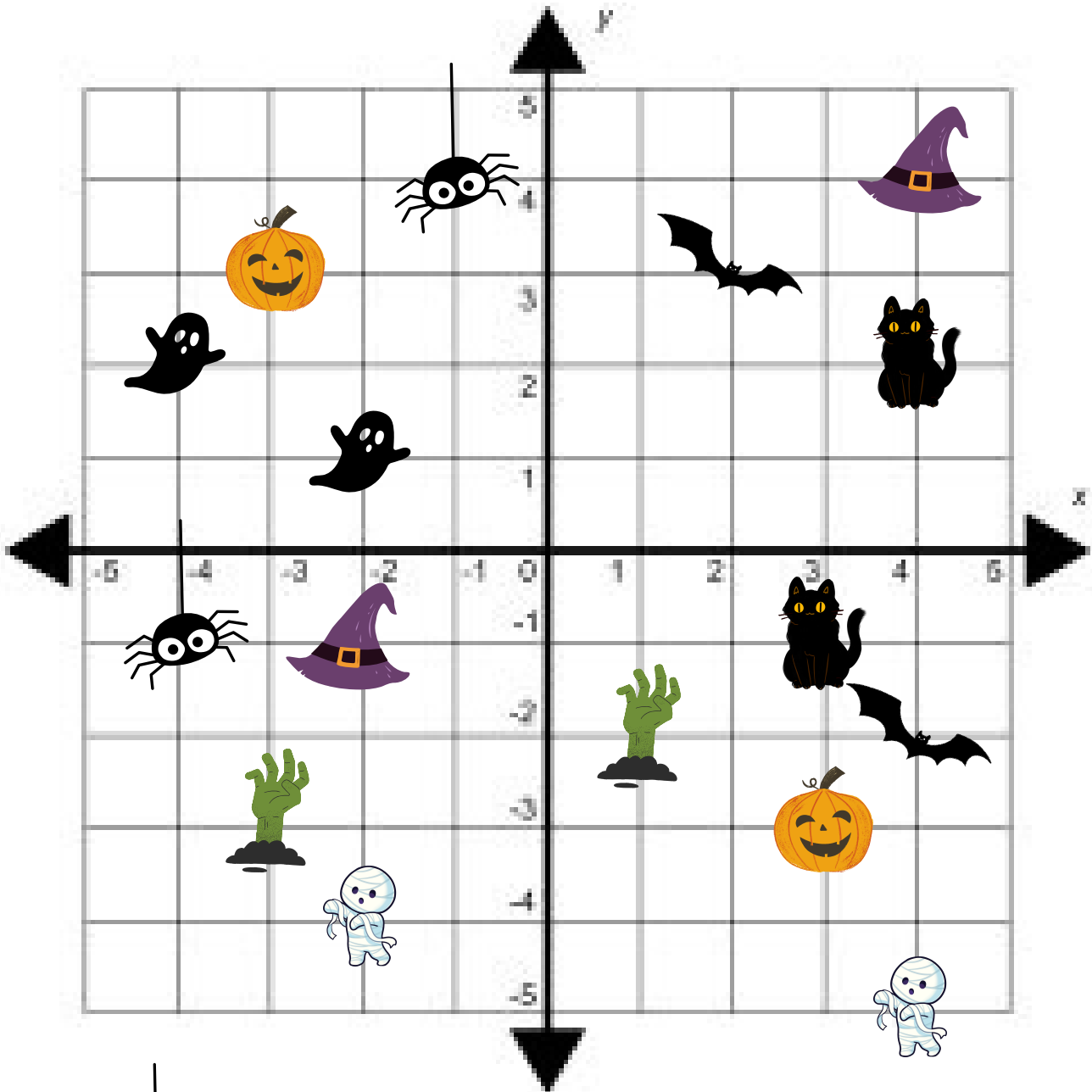


$$\left\{ \begin{array}{l} 4 \\ 1 \end{array} \right\}$$

4 right, 1 up

( , )

# ANSWERS



  $(-4, -1)$

  $(4, 4)$


  $(-2, 1)$

  $(-2, -4)$

  $(4, -2)$

  $(-3, 3)$

  $(3, -1)$

  $(1, -2)$